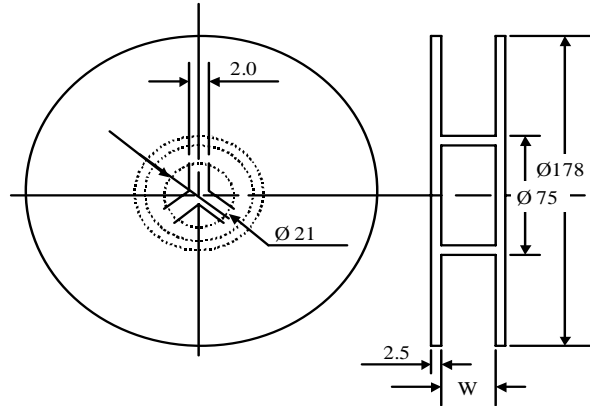


Packing Quantity

TYPE	PCS/REEL
SPI/SWI 0402	10,000
SPI/SWI 0603	3,000
SWI 0805	2,000
SWI 1008	2,000
SWI 1210	2,000
SCI 1210	1,000
SWI 1812	750
SCI 1812	500

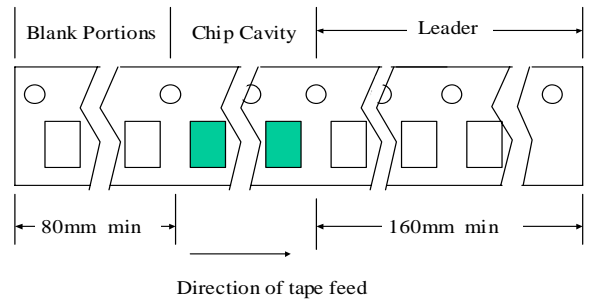
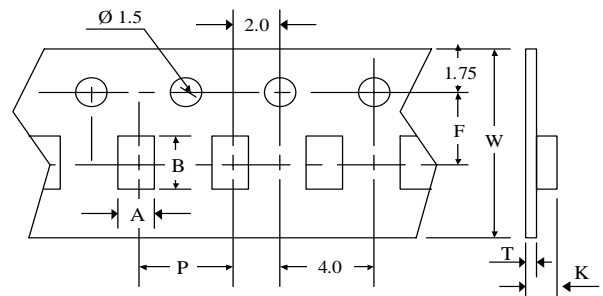
Reel Dimensions



Dimensions (unit: m/m)

TYPE	A	B	P	F	K	T	W
SPI 0402	0.70	1.20	2.00	3.50	0.50	0.70	8.00
SPI 0603	1.00	1.80	4.00	3.50	1.00	0.20	8.00
SWI 0402	0.70	1.20	4.00	3.50	0.50	0.70	8.00
SWI 0603	1.25	1.80	4.00	3.50	1.10	0.20	8.00
SWI 0805	1.42	2.26	4.00	3.50	1.30	0.20	8.00
SWI 1008	2.23	2.73	4.00	3.50	1.80	0.20	8.00
SWI 1210	2.69	3.56	4.00	3.50	2.40	0.20	8.00
SWI 1812	3.60	5.00	8.00	5.50	3.60	0.30	12.00
SCI 1210	2.80	3.60	4.00	3.50	2.40	0.20	8.00
SCI 1812	3.60	5.00	8.00	5.50	3.60	0.30	12.00

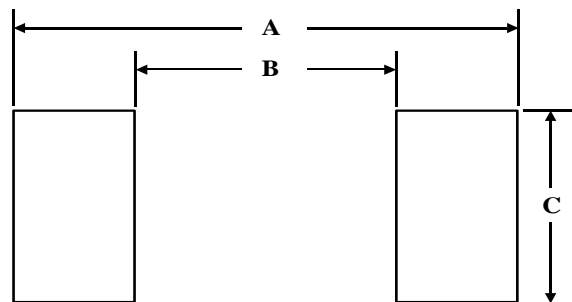
Tape Dimension



Dimensions (unit: m/m)

TYPE	A	B	C
SPI 0402	1.60	0.50	0.05
SPI 0603	2.10	1.00	0.80
SWI 0402	1.20	0.45	0.65
SWI 0603	1.90	0.65	1.00
SWI 0805	2.60	0.75	1.20
SWI 1008	3.00	1.20	2.20
SWI 1210	4.00	1.70	2.82
SWI 1812	5.30	3.00	4.00
SCI 1210	4.00	2.00	2.00
SCI 1812	6.00	3.00	2.80

Recommended Pattern



Remark: 1) Blank length 200 mm minimum for loading
2) Blank length 160 mm minimum for unloading