

Taping Specifications :

1. Carrier Tape

Fig 1-1 $D \leq 10$

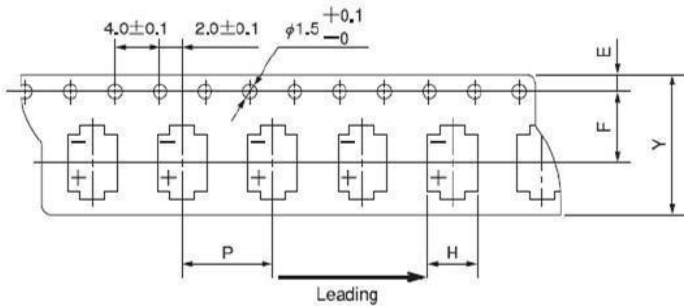
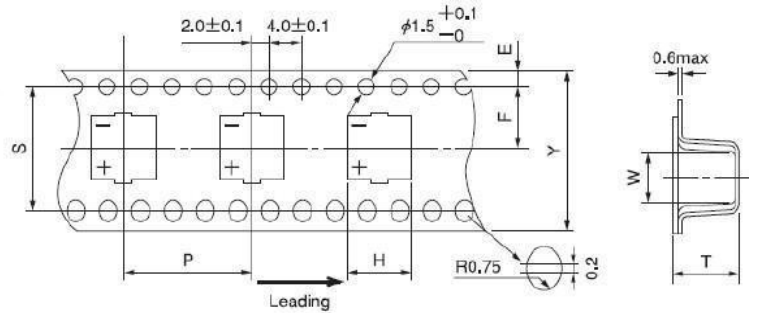


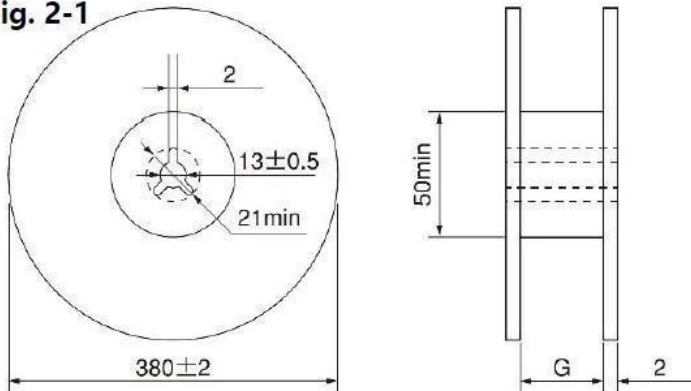
Fig 1-2 $D \leq 12.5$



DXL	$Y \pm 0.3$	$H \pm 0.2$	$W \pm 0.2$	$P \pm 0.1$	$E \pm 0.1$	$F \pm 0.1$	$T \pm 0.2$	$S \pm 0.1$	Fig.No.
A (4X5.7)	12.0	5.0	5.0	8.0	1.75	5.5	6.2	/	1-1
B (5X5.7)	12.0	6.0	6.0	12.0	1.75	5.5	6.2	/	1-1
C (6.3X5.7)	16.0	7.0	7.0	12.0	1.75	7.5	6.2	/	1-1
C8 (6.3X7.7)	16.0	7.0	7.0	12.0	1.75	7.5	8.2	/	1-1
D (8X6.5)	16.0	8.7	8.7	12.0	1.75	7.5	7.0	/	1-1
E (8X10.5)	24.0	8.7	8.7	16.0	1.75	11.5	11.0	/	1-1
E3 (8X13)	24.0	8.7	8.7	16.0	1.75	11.5	13.5	/	1-1
F (10X10.5)	24.0	10.7	10.7	16.0	1.75	11.5	11.0	/	1-1
F3 (10X13)	24.0	10.7	10.7	16.0	1.75	11.5	13.5	/	1-1
G (12.5X13.5)	32.0	13.7	13.7	24.0	1.75	14.2	14.5	28.5	1-2
H (12.5X16)	32.0	13.7	13.7	24.0	1.75	14.2	16.5	28.5	1-2

2. Reel Package

Fig. 2-1



Unit: mm

Case size	G
4~5	14
6.3	18
8x6.5	18
8	26
10	26
12.5	34

Fig. 2-2

→ Pull out direction

