

Data Sheet

Customer: _____

Product: SMD Aluminum Electrolytic Capacitors – ENV Series

Size : 4x5.7mm ~ 10x10.5mm

Issued Date: 06-Nov.-2024

Edition: Ver.3

Record of change

Date	Ver.	Description	Page
15-May-2016	1		
19-Jun.-2024	2	Update size	1,2
06-Nov.-2024	3	Revised Dimension graphics	1

HITANO ENTERPRISE CORP.

7F-7, No. 3, Wu Chuan 1st Road, New Taipei Industrial
Park, New Taipei City, TAIWAN, R.O.C.

Tel: +886 2 2299 1331 (Rep.)

Fax: +886 2 2298 2466, 2298 2969

Prepared by	Checked by	Approved by	Accepted by (customer)
06-Nov.-2024	06-Nov.-2024	06-Nov.-2024	
<i>Randy Yu</i>	<i>Michelle Lin</i>	<i>Arthur Su</i>	

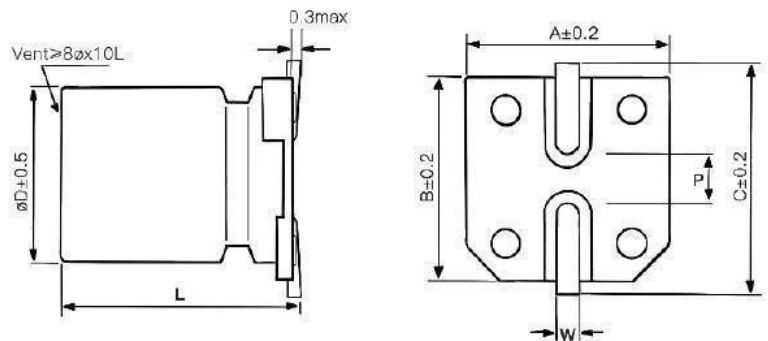
- SMD TYPE Reflow Soldering is available
- 85°C, 2000 hours assured
- Available For High Density Mounting

Characteristics

Voltage Range	6.3 to 50VDC						
Capacitance Range	0.1 to 470uF						
Temperature Range	-40 to +85°C						
Capacitance Tolerance	+20% -20% (at 120Hz, 20°C)						
Leakage Current	I ≤ 0.05CV or 10uA, whichever is greater, 2 minutes after Rated Voltage applied, where C = Rated Capacitance, V = Rated DC working voltage						
Dissipation Factor (tanδ)Max(at 120Hz, 20°C)	Rated Voltage (V)	6.3	10	16	25	35	50
	D.F. (tanδ) max	0.24	0.20	0.17	0.17	0.15	0.15
Stability at Low Temperature (at 120Hz, 20°C)	Rated Voltage(V)	6.3	10	16	25	35	50
	Z-25°C/Z 20°C	4	3	2	2	2	2
	Z-40°C/Z 20°C	8	6	4	3	3	3
Load Life	After the rated voltage has been applied for 2000 hours at 85°C	Capacitance change	Within ±25% of initial value				
		D.F. tanδ	200% or less of initial specified value				
		Leakage current	Less than initial specified value				
Shelf Life	After storage for 1000 hours at 85°C, with no voltage applied and being stabilized at +20°C, Capacitor shall meet the limit specified in load life. Pre-treatment of DC working voltage applied for 30 minutes Shall be conducted before measurement.						

Diagram of dimensions

SIZE	Dφ	L	A	B	C	W	P
A	4	5.7±0.3	4.3	4.3	5.1	0.5~0.8	1.0
B	5	5.7±0.3	5.3	5.3	6.1	0.5~0.8	1.3
C	6.3	5.7±0.3	6.6	6.6	7.3	0.5~0.8	2.2
C8	6.3	7.7±0.3	6.6	6.6	7.3	0.5~0.8	2.2
D	8	6.5±0.5	8.3	8.3	9.2	0.7~1.2	3.2
E	8	10.5±0.5	8.3	8.3	9.2	0.7~1.2	3.2
F	10	10.5±0.5	10.3	10.3	11.2	0.7~1.2	4.4



Multiplier for Ripple Current vs Frequency

Frequency (Hz)	60(50)	120	500	1K	≧ 10K
Multiplier	0.8	1.0	1.20	1.30	1.50

Case size & Maximum Ripple Current (mA rms 85°C 120Hz)

Cap. uF	6.3		10		16		25		35		50	
	Size	RC	Size	RC	Size	RC	Size	RC	Size	RC	Size	RC
0.1												
0.22												
0.33												
0.47												
1											A	8.4
2.2									A	8.4	A	13
3.3							A	12	A	16	A	17
4.7					A	12	A	16	A	18	B/C	20
10			A	17	A/B	23	B/C	27	C	29	C	32
22	A	28	B	33	B/C	33/37	C	40	C8	45	E	60
33	C	37	C	41	C	49	C8/D	51/55	E	58	F	75
47	C	45	C	50	C8/D	51/55	C8/D	56/60	F	64	F	100
100	C8/D	65/70	C8/D	75/80	E	100	E	130				
220	E	120	E	150	F	170						
330	E	160	F	180								
470	F	190										

Part Numbering System

ENV □ □ □ **M** □ □ **R** □
 Series Capacitance Tolerance Rated Voltage Package Case Size