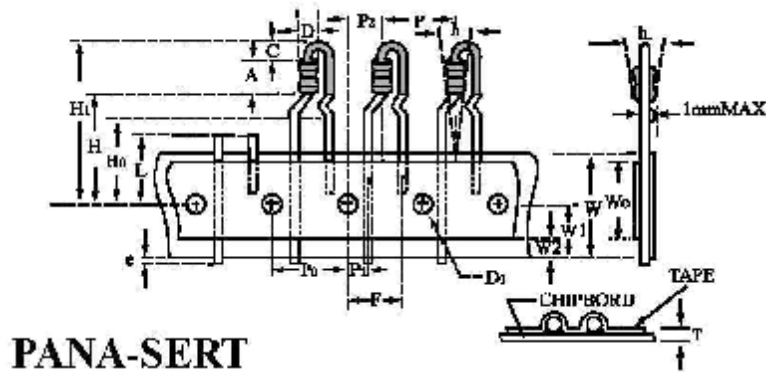


**PANA-SERT & AVI-SERT & GOAL POST
RADIAL LEAD TAPING & PACKING SPECIFICATION**



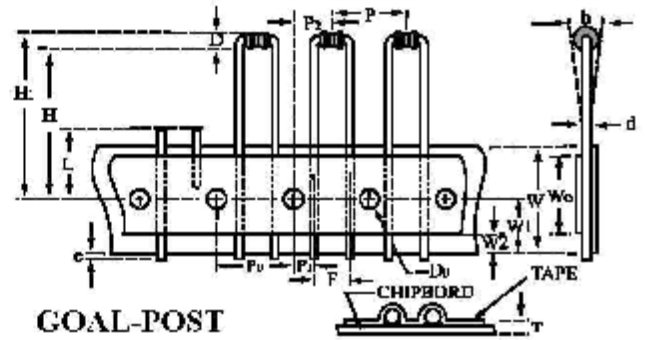
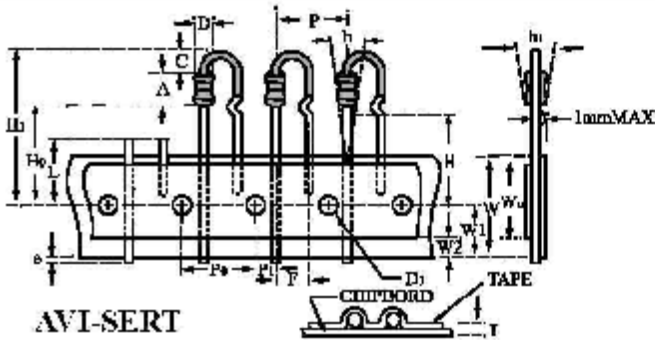
PANA-SERT

PANA-SERT

Description	TYPE	Dimensions (mm)
		PANA-SERT
		1/4W & 1/2WS
Resistor Body Diameter	D	2.3 ± 0.2
Resistor Body Length	A	6.3 ± 0.5
Resistor Pitch	P	12.7 ± 1.0
Sprocket Hole Pitch	P0	12.7 ± 0.3
Sprocket Hole Center To Lead Center	P1	3.85 ± 0.7
Sprocket Hole Venter To Resistor Center	P2	6.35 ± 1.0
Resistor Lead Spacing	F	5.0 ± 1.0
Resistor Alignment	h	0 ± 2.0 (0±5 ⁰)
Chipboard Width	W	18 +1.0/-0.5
Hold-Down Tape Resistor	W0	12.0 MIN
Sprocket Hole Position	W1	9.0 +0.75/-0.5
Hold-Down Tape Position	W2	6.0 Max
Height To Bottom Of Resistor	H	19.0 ± 1.0
Height To Lead Clinch	H0	16.0 ± 0.5
Lead Protrusion	e	2.0 Max
Sprocket (Hold) Diameter	D0	4.0 ± 0.3
Thickness (Chipboard And Tape)	T	0.7 ± 0.2
Cutout Length	L	11.0 Max
Height Of Resistor	H1	28.5 Max
Height Of Bending	C	2.5 ± 0.5
Resistor Alignment	h1	0 ± 2.0 (0±5 ⁰)

Cumulative Pitch Tolerance Not To Exceed ± 1.0mm Over 20 Consecutive Pitches

PANA-SERT & AVI-SERT & GOAL POST RADIAL LEAD TAPING & PACKING SPECIFICATION

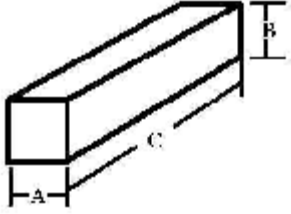
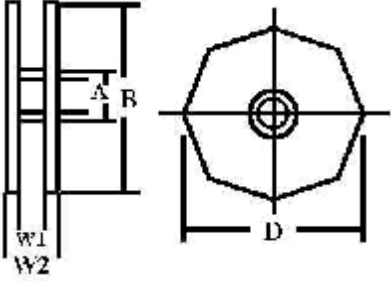


Description	TYPE	Dimensions (mm)	
		AVI-SERT	GOAL-POST
		1/4W & 1/2WS	1/8W & 1/4WS
Resistor Body Diameter	D	2.3 ± 0.2	1.8 ± 0.3
Resistor Body Length	A	6.3 ± 0.5	3.3 +0.4/-0.2
Resistor Pitch	P	12.7 ± 1.0	12.7 ± 1.0
Sprocket Hole Pitch	P0	12.7 ± 0.3	12.7 ± 0.5
Sprocket Hole Center To Lead Center	P1	3.85 ± 0.7	3.85 ± 0.7
Sprocket Hole Venter To Resistor Center	P2	6.35 ± 1.3	6.35 ± 1.0
Resistor Lead Spacing	F	5.0 +0.8/-0.2	5.0 ± 0.8
Resistor Alignment	h	0 ± 2.0 (0±5 ⁰)	0 ± 1.0
Chipboard Width	W	18 +1.0/-0.5	18.0 ± 1.0
Hold-Down Tape Resistor	W0	12.0 ± 1.0	12.0 ± 1.0
Sprocket Hole Position	W1	9.0 +0.75/-0.5	9.0 ± 0.5
Hold-Down Tape Position	W2	6.0 Max	6.0 Max
Height To Bottom Of Resistor	H	16.0 +1.0/-0.3	21.0 Max
Height To Lead Clinch	H0	16.0 ± 0.5	---
Lead Protrusion	e	1.0 Max	2.0 Max
Sprocket (Hold) Diameter	D0	4.0 ± 0.3	4.0 ± 0.3
Thickness (Chipboard And Tape)	T	0.7 ± 0.2	0.7 ± 0.2
Cutout Length	L	11.0 Max	11.0 Max
Height Of Resistor	H1	27.0 Max	32.25 Max
Height Of Bending	C	3.0 +0-1	---
Lead Wire Diameter	d	---	0.45 ± 0.03
Resistor Alignment	h1	0 ± 2.0 (0±5 ⁰)	---

Cumulative Pitch Tolerance Not To Exceed ± 1.0mm Over 20 Consecutive Pitches

**PANA-SERT & AVI-SERT & GOAL POST
RADIAL LEAD TAPING & PACKING SPECIFICATION**

**PANA-SERT & AVI-SERT & GOAL-POST RESISTORS PACKING
SPECIFICATION**

DIMENSION(mm)	AMMO			REEL				
								
(mm)	A	B	C	A	B	C	W1	W2
	53	120	325	31	76	312	44	50
Q,TY/BOX	2000PCS OR 3000 PCS			2500PCS OR 3000PCS				

HOW TO ORDER:

<u>CR025</u>	<u>F</u>	<u>P</u>	<u>TB</u>	<u>:</u>	<u>10R</u>
↓	↓		↓	↓	↓
Type/Power	Tol.	Style	Package	ppm	Resistance
	F=±1%	P = Pana-sert	TR=Tape/reel	- = Based on spec.	10R = 10Ω
	J=±5%	V = Avi-sert	TB=Tape/box		1K2 = 1.2KΩ
		M = Goal-post			